

MONTHLY MEMBERSHIP PROGRESS REPORT

LOCATION **LEBANON**

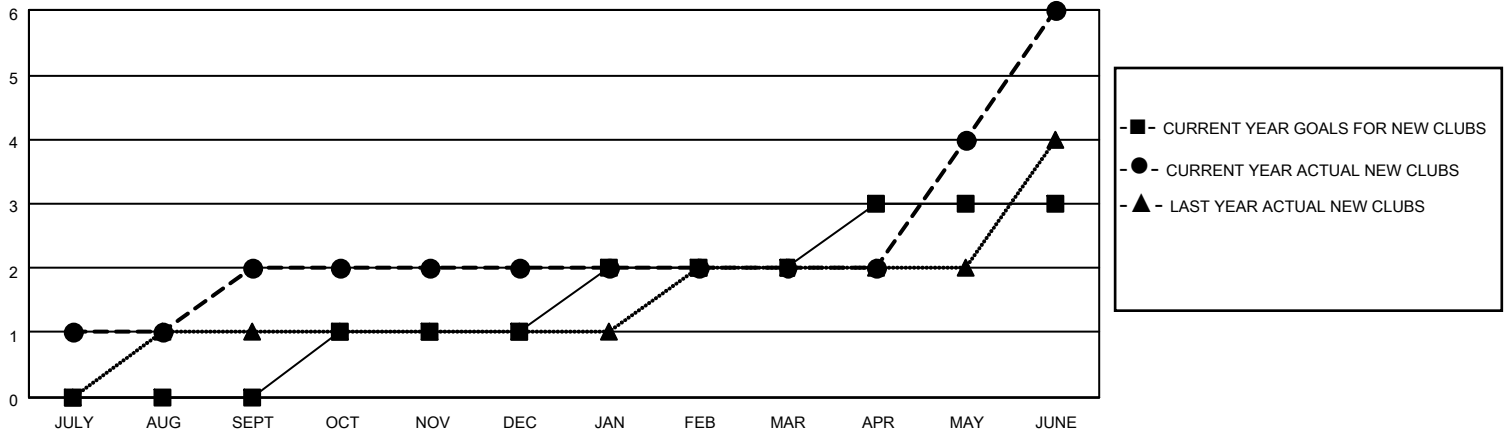
District 351

Results as of: 6/30/2021

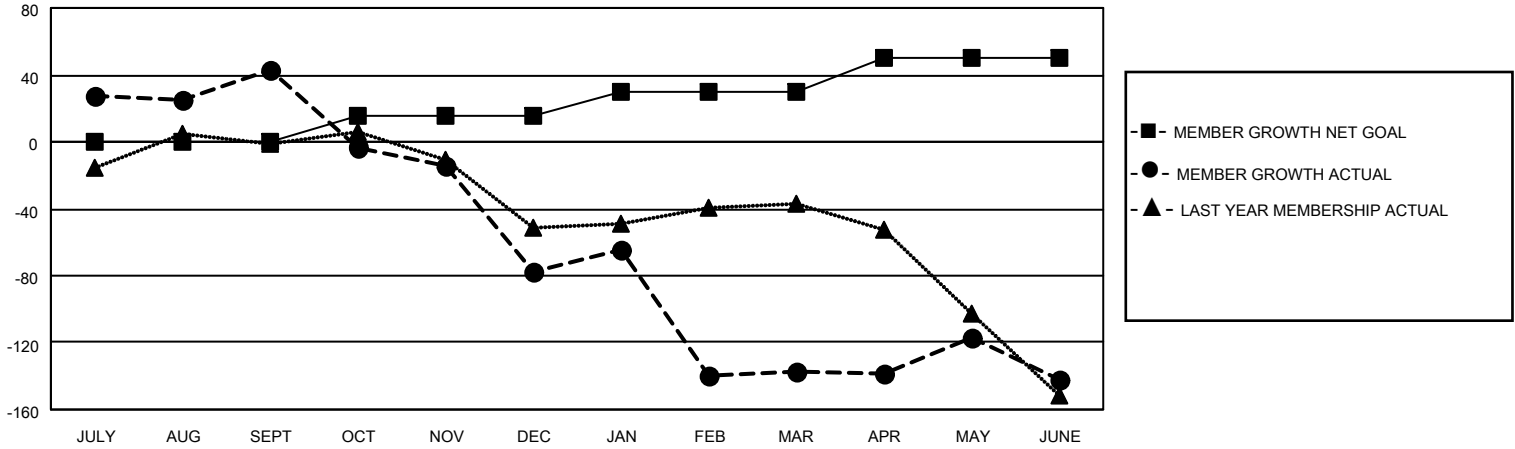
Clubs			
RESULTS FOR 2020-2021			
QUARTER	NEW CLUB GOAL	NEW CLUBS	DROPPED CLUBS
JULY/AUG/SEPT	0	2	2
OCT/NOV/DEC	1	0	1
JAN/FEB/MAR	1	0	5
APR/MAY/JUNE	1	4	0

Members			
RESULTS FOR 2020-2021			
QUARTER	MEMBER GROWTH NET GOAL	MEMBER GROWTH ACTUAL	DROPPED MEMBERS ACTUAL (including transfers)
JULY/AUG/SEPT	0	124	68
OCT/NOV/DEC	15	130	233
JAN/FEB/MAR	15	100	119
APR/MAY/JUNE	20	188	166

GOALS AND ACTUAL NEW CLUBS CUMULATIVE



GOALS AND ACTUAL MEMBERS CUMULATIVE



DROPPED CLUBS: 8	
DROPPED MEMBERS	
DECEASED	15
CLUB CANCELLED	128
OTHER	443
TOTAL	586

60 CLUBS OF 120 ADDED 1 OR MORE NEW MEMBERS

<u>GENDER DISTRIBUTION</u>	
MALE	1,185 (54.48%)
FEMALE	990 (45.52%)

[CLICK HERE FOR CUMULATIVE MEMBERSHIP DATA](#)

TOTAL FAMILY UNIT MEMBERS	927
FAMILY MEMBERS PAYING HALF DUES	606